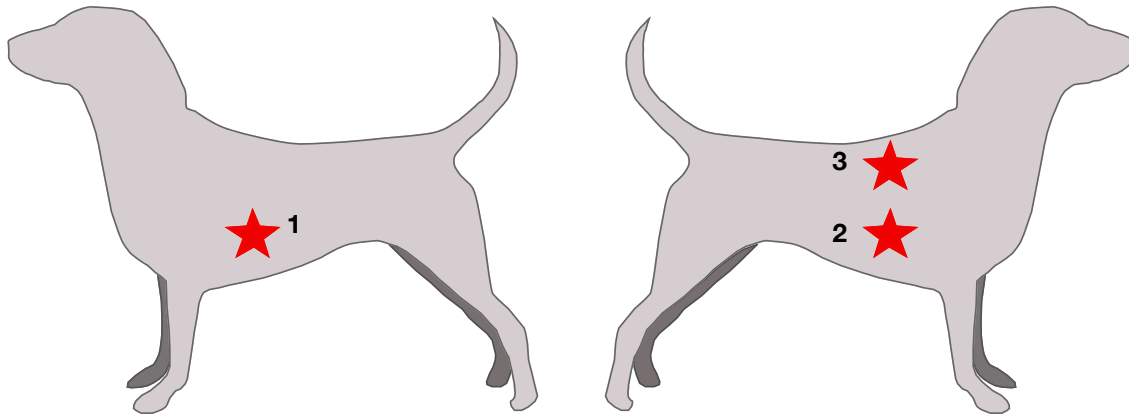
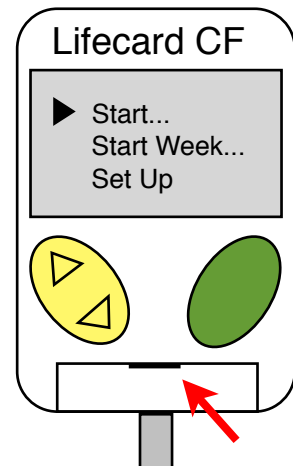


F689 – Fitting the Lifecard CF Holter Monitor to a Canine Patient

- Clip three patches of hair in the locations shown below, large enough to accommodate the electrodes:



1. Left lower - just caudal to the apex beat (where the heartbeat can be palpated caudal to the left elbow)
 2. Right upper - at the caudal border of the right scapula
 3. Right lower - just caudal to the apex beat on the right
- Clean the skin with surgical spirit to remove grease. Allow to dry then place an electrode on each location; peel off the plastic backing, place the electrode on the skin and press firmly around the flat adhesive area (avoid the central area where pressure may disperse the gel, reducing adhesion).
 - Open the Holter monitor. Pull down the tab on the front of the monitor immediately above the grey wire at the bottom (red arrow) then open the monitor holding the front and back panels at the sides (see below).
 - The digital CF card is preloaded – you do not need to remove it.
 - Load the battery then close the unit by connecting the top hinge, closing the two halves and closing up the bottom tab. The monitor should switch on automatically and will emit audible beeps whilst scrolling through the welcome screens.



Images courtesy of Spacelabs Healthcare www.spacelabs.com

- Wait until “Start” is highlighted on screen. If you have requested a 7 day recording use the yellow scroll button to move down and select “Start Week” instead of “Start”.



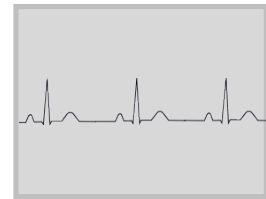
- Press the green button to advance to the next screen “Speech Recording”



- Select “Record” using the green button. Speak clearly into the monitor with the patient name, owner surname, date and time.

When the recording has finished listen to the playback and press the green button to confirm and advance to the next screen.

- Pass the leads through the hole in the Holter vest from the outside towards the patient, and load the monitor into the pocket during fitting.

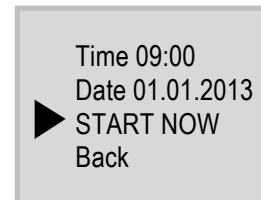


- Connect the leads to the electrodes as follows:

1. Left lower - green
2. Right upper - yellow
3. Right lower - red

An ECG trace should now display on the screen.

- Secure the Holter vest around the patient using the velcro to ensure a snug but comfortable fit. Excess lead length can be retracted and stored under the monitor in the pocket with some slack to allow for patient movement.
- Press the green button to select “START NOW”. The next screen should show the time and say “recording”. IT IS VITAL THAT THIS SCREEN IS SHOWING OR THE TRACE WILL NOT BE RECORDED.



- Cover the monitor with the outer flap of the Holter vest and secure the velcro. Ensure no leads or electrodes are visible and that the patient is comfortable.



- Please complete the supplied request form at fitting and removal of the monitor, and return this form with the monitor and patient diary.
- When you have FINISHED recording, disconnect from the patient by undoing the two velcro strips on the vest, opening the vest and disconnecting the leads from the electrodes. DO NOT TURN THE MONITOR OFF OR REMOVE IT FROM VEST POCKET.
- Remove electrodes carefully using surgical spirit. A topical preparation can be applied if there is any inflammation at the sites of attachment.
- Please return the MONITOR using our courier service. To arrange a collection simply reply to the email sent upon dispatch or email eml@expressdiagnostics.co.uk
- You DO NOT NEED TO RETURN THE VEST – this can be re-used by the practice for future recordings (which are discounted accordingly). Vests can be washed at 40°C and tumble-dried on low heat. For best results brush off excess hair and fasten Velcro loosely during wash cycle.
- **If you have any queries please contact HeartVets on 0800 999 4333.**

To view a video of the fitting procedure go to www.heartvets.co.uk and click **Request a Holter**